

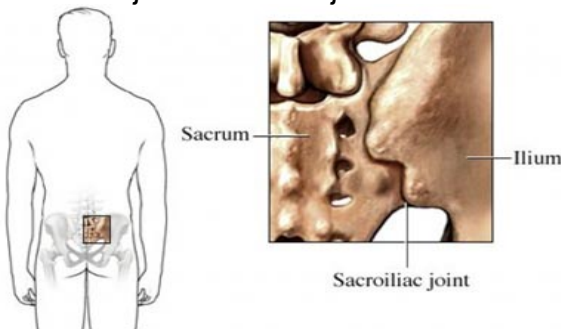


Lumbar Support (SI) Belt

Injury prevention – treatment – enhanced rehabilitation

The Nexus Lumbar Support (SI) Belt is the next generation design for the prevention, relief and treatment of; lower back pain, slipped disc, trapped nerves, pelvic instability, sacroiliac joint dysfunction (SJD) and maternity / weight induced back discomfort.

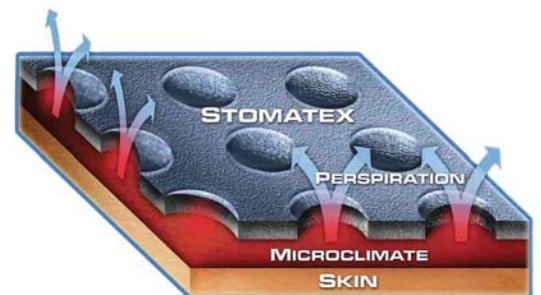
Extensive research has shown that the majority of back pain cases are due to strain or damage to the sacroiliac joint which transfers the weight of the body from the spine, through the pelvis to the legs. In a 1992 study of 1000 patients with lower back pain, 98% had a mechanical dysfunction of the sacroiliac joints as a major cause of their lower back pain.



The Nexus Lumbar (SI) Belt compresses and supports the sacroiliac joints, thereby relieving instability and stress, this enables the joints to heal and limits further damage and discomfort during movement. When worn prior to exercise the belt keeps muscle temperature stable to prevent damage to soft muscle tissue and joint.

Key Benefits of Nexus Lumbar Support Belt

- Due to the wide area that the Nexus Lumbar (SI) Belt supports, it provides relief from discomfort to numerous lower back pain conditions.
- Unlike many other support belts, the Nexus Lumbar (SI) Belt is made from a fully breathable neoprene material [Stomatex®]. This allows the body temperature to remain more constant during exercise and rest and eliminates heat build up and the irritation from sweat and moisture retention.
- Its lightweight design and breathable soft fabric allows the belt to be worn for far greater periods of time than traditional neoprene belts without any discomfort.
- The simple fold over securing system allows the user to tension the belt to give them the precise level of support to target key points of discomfort.
- The belt is fully washable and can be worn under or over clothing (man made fibres must be used to allow the belt to breath when worn outside of clothing)
- The Nexus Lumbar Support (SI) Belt comes in one size to suit hips up to 1475mm (58") Belt dimensions are 1150mm (45") x 145mm (5.7") with soft Jersey nylon lining.



For further product and sales information, please contact sales@nexuseu.com or visit our website at www.nexuseu.com. Alternatively phone +44 (0)1503 230214